



## Flat 10 St. Nicholas Place | | Sheringham | NR26 8LE

### Offers In Excess Of £370,000

**\*\*WELCOME TO ST NICHOLAS PLACE A SELECTION OF 1,2 AND 3 BED LUXURY APARTMENTS AVAILABLE TO BUY OFF PLAN NOW \*\*** Gilson Bailey are delighted to offer this bespoke range of incredibly spacious apartments that will be finished to impeccable standards, situated in the popular town of Sheringham, an area of outstanding natural beauty on the North Norfolk coast, nestling between the sea and Pretty Corner woods.

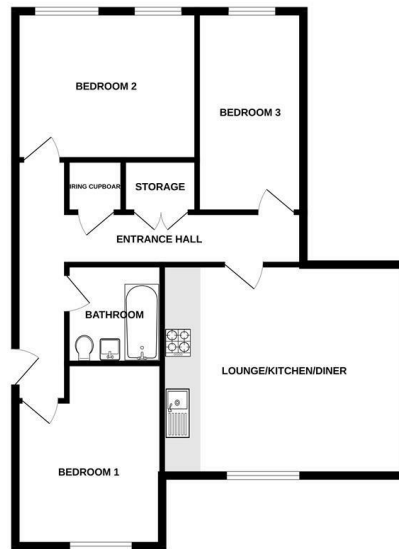
Flat 10 is a three bedroom, first floor apartment offering approximately 886 SQFT of living accommodation which comprises of an entrance hall, open plan lounge/kitchen/diner, modern bathroom and three bedrooms. Each apartment will have its own allocated off road parking space, and there will be well kept landscaped communal grounds. The apartments benefit from high ceilings which make for a beautiful light and airy feel.

The contemporary kitchen is from the Plaza Porcelain range with brushed nickle bow handles with carbon steel worktops and LED under cabinet lights. There is a built in Zanussi Fridge Freezer, Dishwasher, and washer dryer. As well as a Brushed Steel Zanussi oven with ceramic hob and cooker hood. Each apartment will come with Porcelanosa ceramic tiles in the kitchen area and bathrooms. The apartments will have a mixture of white UPVC sash windows with timber grain effect and white UPVC casement windows. Apartments 1, 3 and 6 will have air source heat pumps while the other 9 apartments will come with gas combination boilers.

Other features include chrome towel rails, chrome downlights to the bathrooms and kitchen, BT connection points and USB charging, Paxton video door entry system with remote release, Dimplex Edel hot water heat pump to provide reduced carbon emission, Low voltage dual speed extract ventilation to provide constant background extraction with boost function.



FIRST FLOOR



While every attempt has been made to ensure the accuracy of the floorplans contained here, measurements of floors, walls, doors and any other items are approximate and no responsibility is taken for any error, omission or misstatement. This plan is for illustrative purposes only and should be used as such for any prospective purchase. The services, systems and appliances shown have not been tested and no guarantee as to their condition or reliability can be given. Made with Netpage 12/23

### Location

St Nicholas Place is perfectly nestled in a discreet and quiet residential area of mostly Victorian and Edwardian properties providing the perfect balance of coastal and town life, within an easy stroll from Beautiful Sheringham beach, charming shops with vibrant eateries. It will not only be perfect for those looking to move in and enjoy the conveniently modern living accommodation, they will also be a perfect holiday retreat or investment.

Sheringham is a delightful town in an area of outstanding natural beauty on the North Norfolk coast, nestling between the sea and Pretty Corner woods. The town is popular for both holiday and retirement and the centre has an excellent range of independent shops and supermarkets whilst other amenities include bus and rail services to bustling city of Norwich and the nearby towns of Holt and Cromer. There is a modern health centre, dentist, theatre and library, together with Splash Leisure Centre and a magnificent 18 hole golf course. Education is well catered for with schooling for all ages in the town and a choice of independent schools within a few miles. There are also some excellent coastal and woodland walks in the vicinity. Sheringham beach enjoys a blue flag status and is extremely family friendly with a mix of shingle and sand depending on the tide with a wide promenade running the length of the town.

### Accommodation Comprises

Front door to:

### Entrance Hall

Doors to lounge/kitchen/diner, three bedrooms and bathroom.

**Lounge/Kitchen/Diner 17'2" x 14'9"**

**Bedroom One 12'10" x 10'4"**

**Bedroom Two 13'11" x 9'2"**

**Bedroom Three 14'2" x 7'4"**

**Bathroom 6'10" x 6'11"**

### Outside

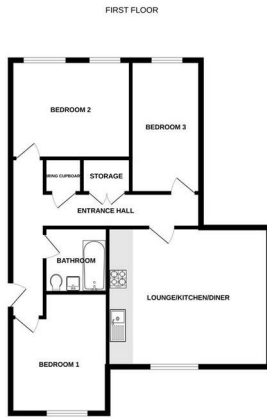
Landscaped communal gardens and one off road parking space.

### Local Authority

North Norfolk District Council.  
Tax Band tbc

### Tenure

Solicitors are currently compiling a 125 year lease for the property.  
Service charge to also be confirmed.



© Gilson Bailey Ltd 2018. All rights reserved. This document is the property of Gilson Bailey Ltd and is not to be reproduced, stored in a retrieval system, or transmitted in any form or by any means, electronic, mechanical, photocopying, recording, or otherwise, without the prior written permission of Gilson Bailey Ltd.



**Energy Efficiency Rating**

	Current	Potential
Very energy efficient - lower running costs		
(92 plus) <b>A</b>		
(81-91) <b>B</b>		
(69-80) <b>C</b>		
(55-68) <b>D</b>		
(39-54) <b>E</b>		
(21-38) <b>F</b>		
(1-20) <b>G</b>		
Not energy efficient - higher running costs		
<b>England &amp; Wales</b>	EU Directive 2002/91/EC	

**Local Authority**

North Norfolk District Council

**Tenure**

Leasehold

Please note that we have not tested any apparatus, equipment, fixtures, fittings or services and as so cannot verify that they are in working order or fit for their purpose. Gilson Bailey cannot guarantee the accuracy of the information provided. This is provided as a guide to the property and an inspection of the property is recommended.